



UNRBA
Monitoring Program
PFC Meeting
November 2015



July 23, 2015

Interim Report





Interim Report

- E-mailed to PFC on Thursday, October 29, 2015
- Covers period through June 2015 (FY2015)
- Purpose
 - Review monitoring program status and data collection efforts
 - Routine Monitoring
 - Special Studies
 - Provide a preliminary exploration of the data
 - With 11 months of data it is premature to draw extensive conclusions
- Focuses on tributary data; lake data will be included in annual report



Routine Monitoring

- Repeated testing of water quality at fixed locations.
- Provide insight into seasonal and spatial variation of nitrogen, phosphorus, and other parameters.
- Provide data for water quality models.

Special Studies

- Focused data collection efforts to inform water quality modeling to more accurately simulate baseline and management scenarios

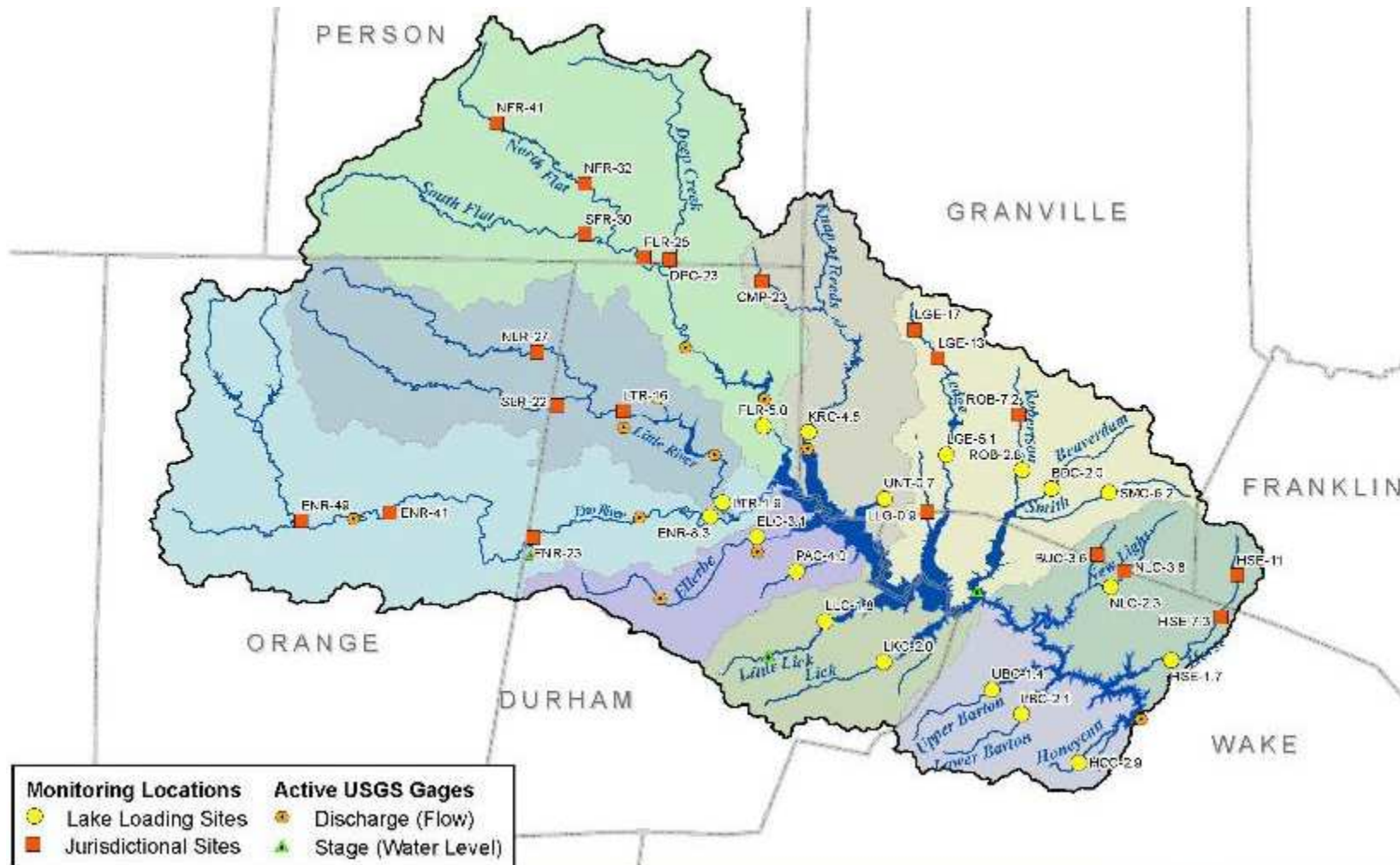


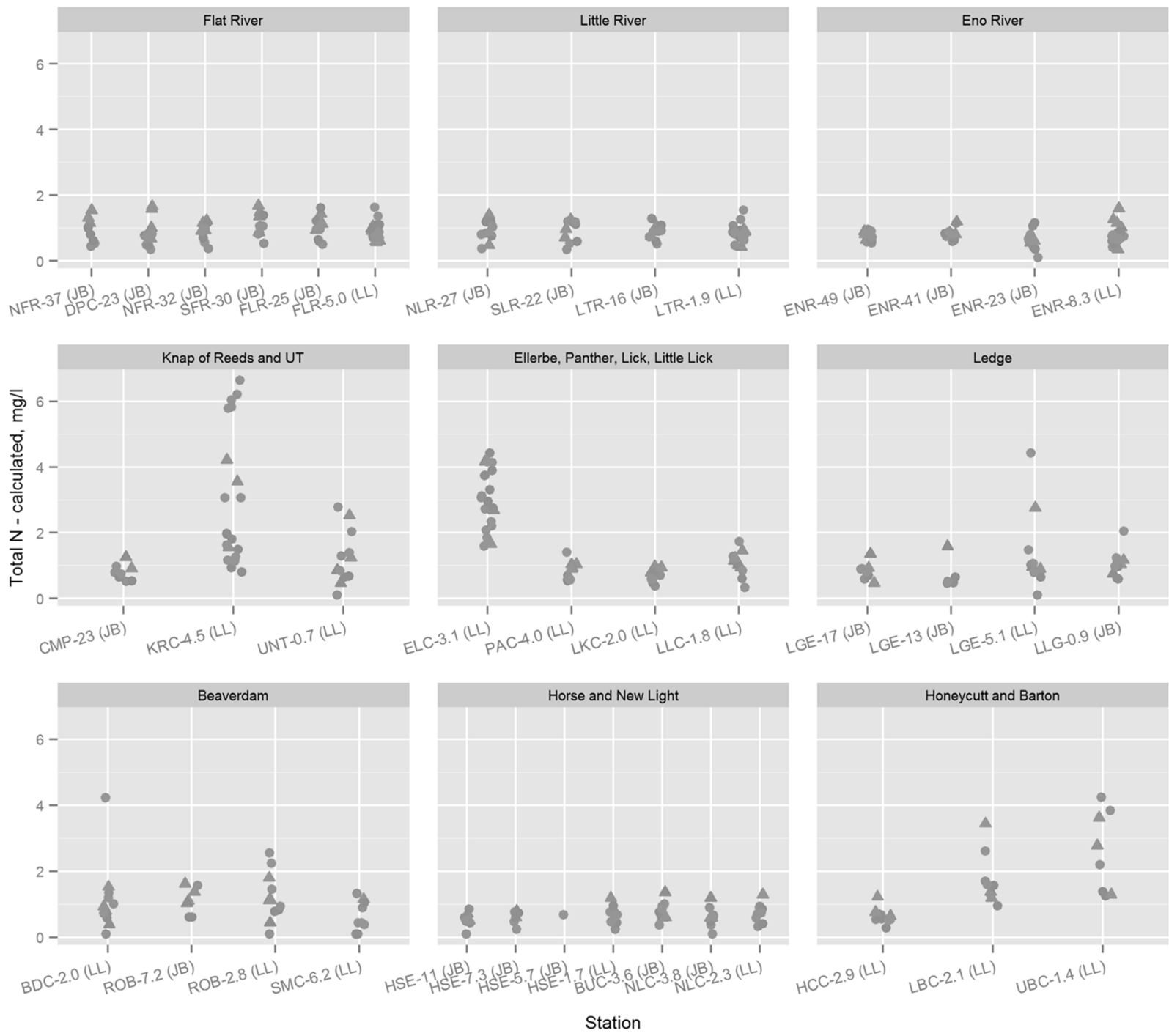
Routine Monitoring



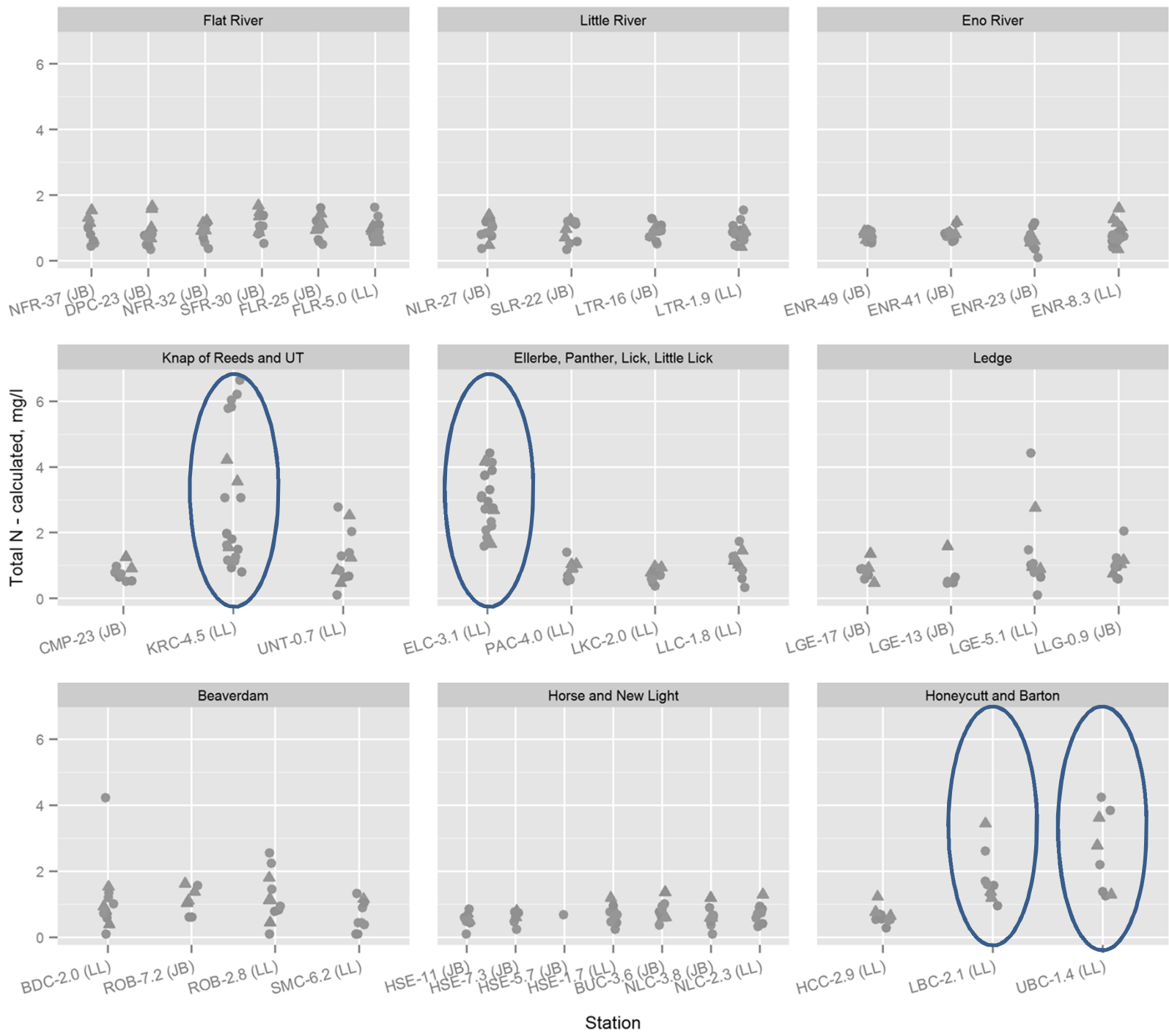
468 sampling attempts between August 2014 and June 2015

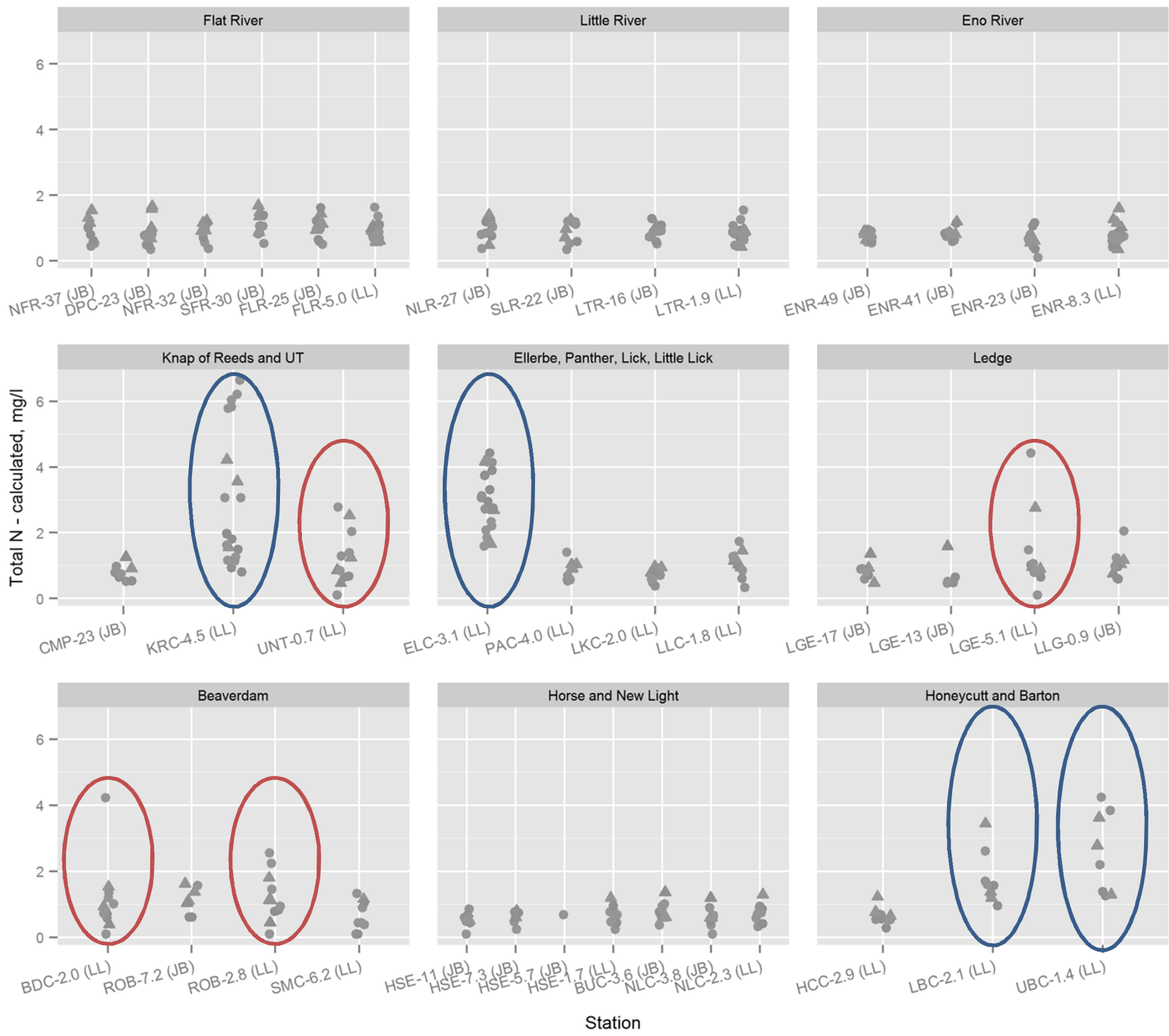
- 6% of attempts occurred when there was no water, no flow, or not enough water
- < 2% prevented by road or bridge construction
- < 2% prevented by ice storms despite multiple attempts over several days (February).



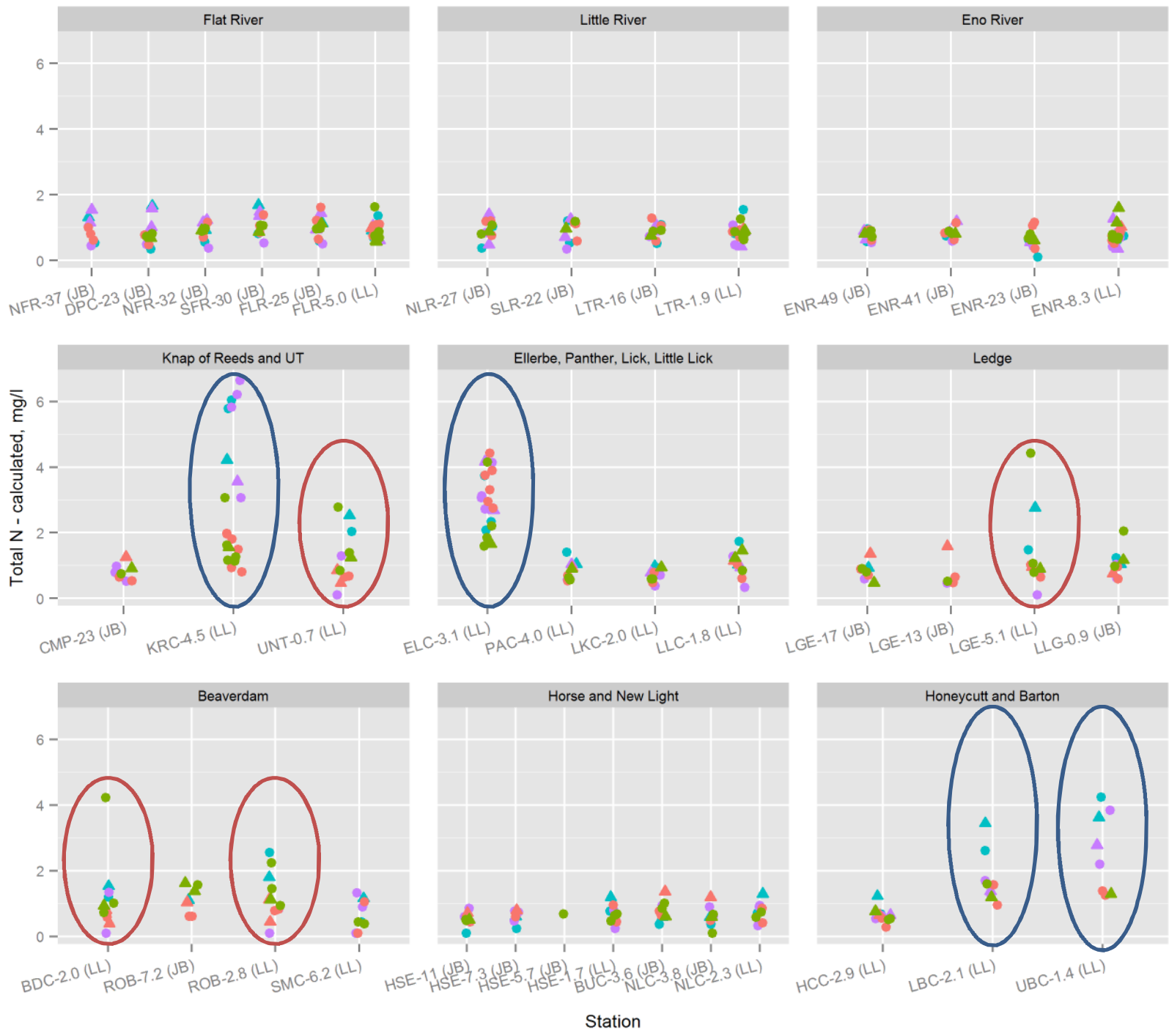


Station





Station



Rain in prior 48 hours

- Less than 0.25 in.
- △ More than 0.25 in.

Season

- winter
- spring
- summer
- fall