



UNRBA
Monitoring Program
PFC Meeting
August 2016



August 24, 2016



FY2016 Routine Monitoring Wrap-up

- Pending documents for FY2016 Monitoring Program:
 - Model Evaluation Special Study Report
 - Revised based on comments from PFC
 - Submitted to Forrest
 - FY2017 Monitoring Plan Update & QAPP
 - Revised documents sent to PFC
 - UNRBA to submit to DWR

FY2017 Monitoring Program





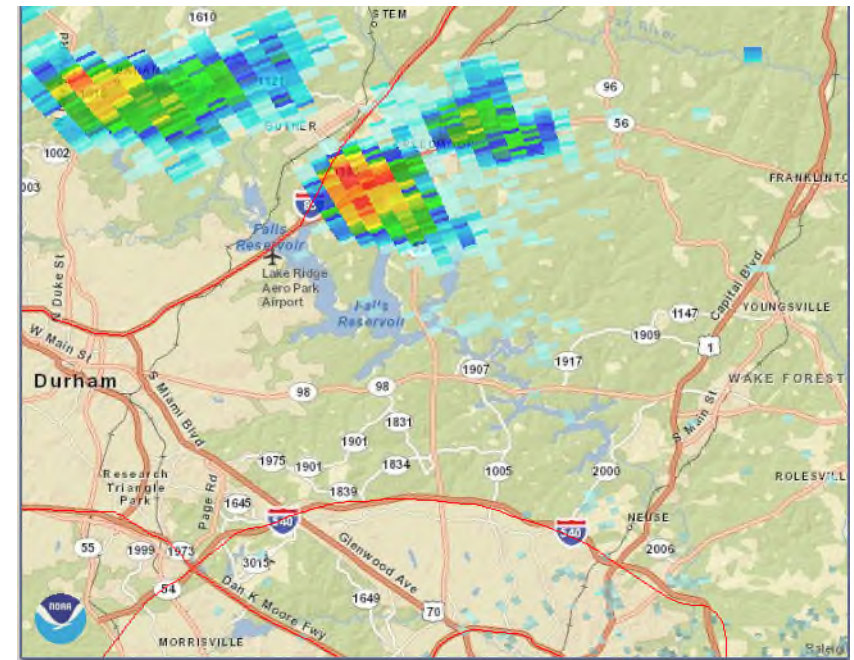
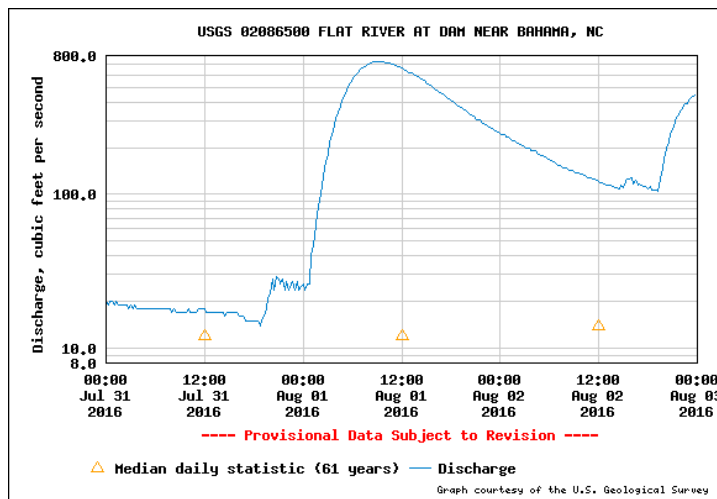
Routine Monitoring – Data generation status

Date	Sample Collection	Sample Analysis	Data Review	Posted to Database
Aug-Dec 2014	✓	✓	✓	✓
Jan-Dec 2015	✓	✓	✓	✓
Jan-2016	✓	✓	✓	✓
Feb-2016	✓	✓	✓	✓
Mar-2016	✓	✓	✓	✓
Apr-2016	✓	✓	✓	✓
May-2016	✓	✓	✓	✓
Jun-2016	✓	✓		
Jul-2016	✓	✓		
Aug-2016	✓			
Sep-2016				
Oct-2016				
Nov-2016				
Dec-2016				



FY 2017 High Flow Sampling

- Study plan submitted to Forrest
- Captured high flow conditions following July 31st storm on Flat River and Ellerbe Creek





Sediment study update

- Prof. Marc Alperin has reviewed the results of the sampling effort, calculated flux estimates, and is running sensitivity analyses on sediment diagenesis models.
- Marc can present results to the PFC at an upcoming meeting.



