

# Monitoring Program Update

Board of Directors Meeting

January 2017



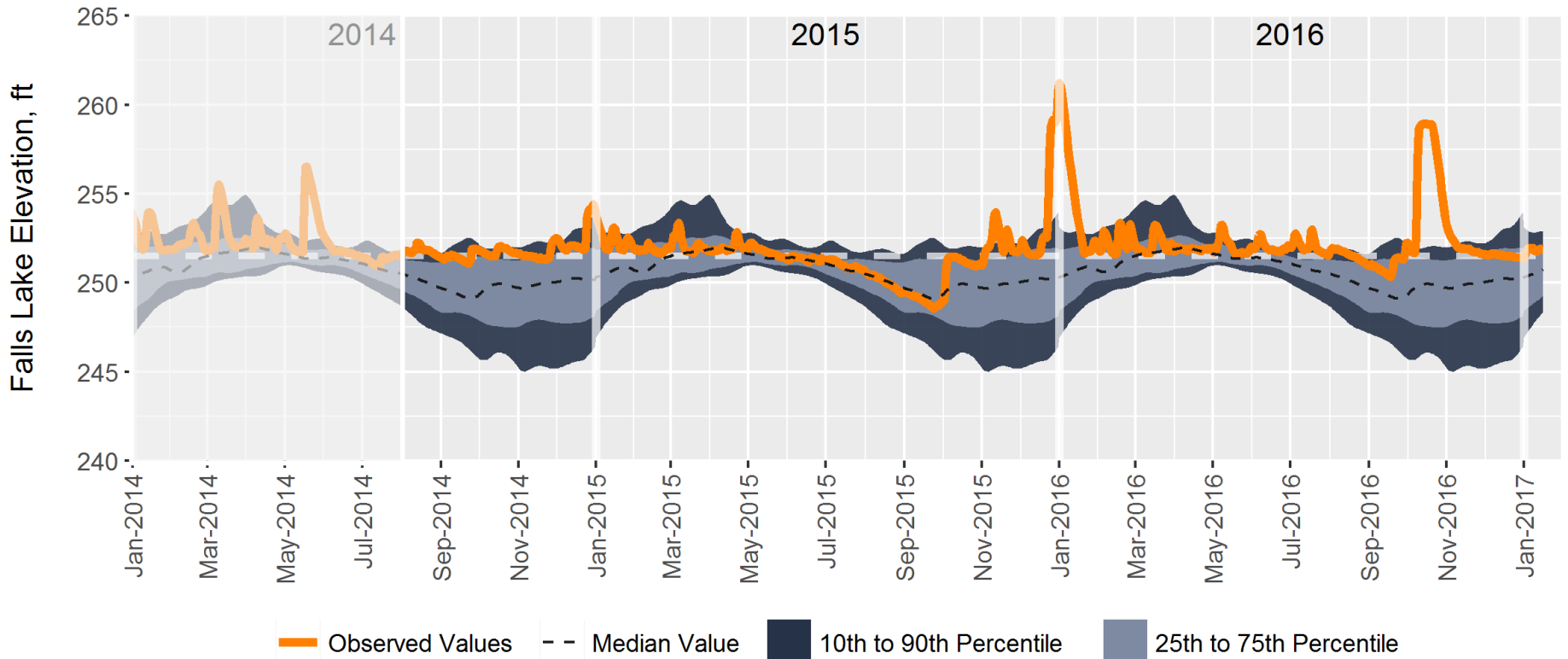


## Routine Monitoring – Data generation status

Date	Sample Collection	Sample Analysis	Data Review	Posted to Database
<b>Aug-Dec 2014</b>	✓	✓	✓	✓
<b>Jan-Dec 2015</b>	✓	✓	✓	✓
Jan-2016	✓	✓	✓	✓
Feb-2016	✓	✓	✓	✓
Mar-2016	✓	✓	✓	✓
Apr-2016	✓	✓	✓	✓
May-2016	✓	✓	✓	✓
Jun-2016	✓	✓	✓	✓
Jul-2016	✓	✓	✓	✓
Aug-2016	✓	✓	✓	✓
Sep-2016	✓	✓	✓	✓
Oct-2016	✓	✓	✓	✓
Nov-2016	✓	✓		
Dec-2016	✓	✓		
Jan-2017	✓			



# Lake Level – UNRBA Monitoring Program





# Special Studies Updates



## High Flow Sampling

- Collect water quality data when inflows to Falls Lake are high
- No samples collected in November or December (no high flow events)
  - below average rainfall
  - precipitation occurred in small amounts which did not produce significant runoff events

	November	December
Average Precipitation	3.1 inches	3.1 inches
2016 Precipitation	0.6 inches	1.5 inches

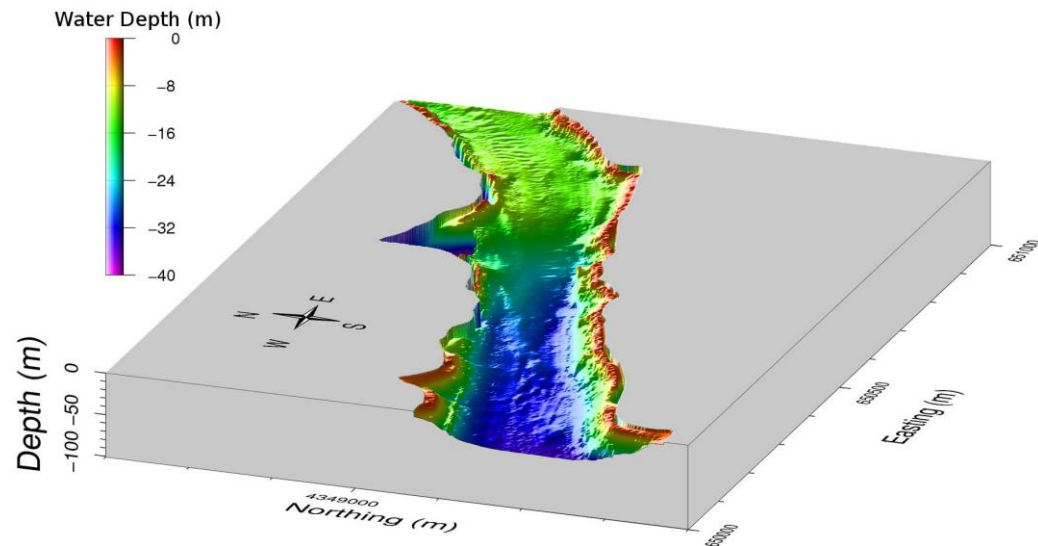
**Average Precipitation** is 30 year average from weather.gov for RDU.

**2016 Precipitation** values are averages from USGS rain gages within the basin.



## Bathymetry and Sediment Mapping

- Map the underwater topography for improved modeling of the retention and movement of water through the reservoir.
- Planned for Spring 2017
- Study plan has been reviewed and will be posted online.



(example of a bathymetric map of a reservoir segment, USGS)

