

Monitoring Program Status Update

September 19, 2018



Routine Monitoring Update

Routine Monitoring Status

Date	Sample Collection	Sample Analysis	Data Review	Posted to Database
Aug – Dec 2014	✓	✓	✓	✓
Jan – Dec 2015	✓	✓	✓	✓
Jan – Dec 2016	✓	✓	✓	✓
Jan – Dec 2017	✓	✓	✓	✓
January 2018	✓	✓	✓	✓
February 2018	✓	✓	✓	✓
March 2018	✓	✓	✓	✓
April 2018	✓	✓	✓	✓
May 2018	✓	✓	✓	✓
June 2018	✓	✓	✓	
July 2018	✓	✓		
August 2018	✓	✓		
September 2018	✓			
October 2018				

The UNRBA has now collected Routine Monitoring samples for 50 months.

One month left in the data collection window for the modeling effort.

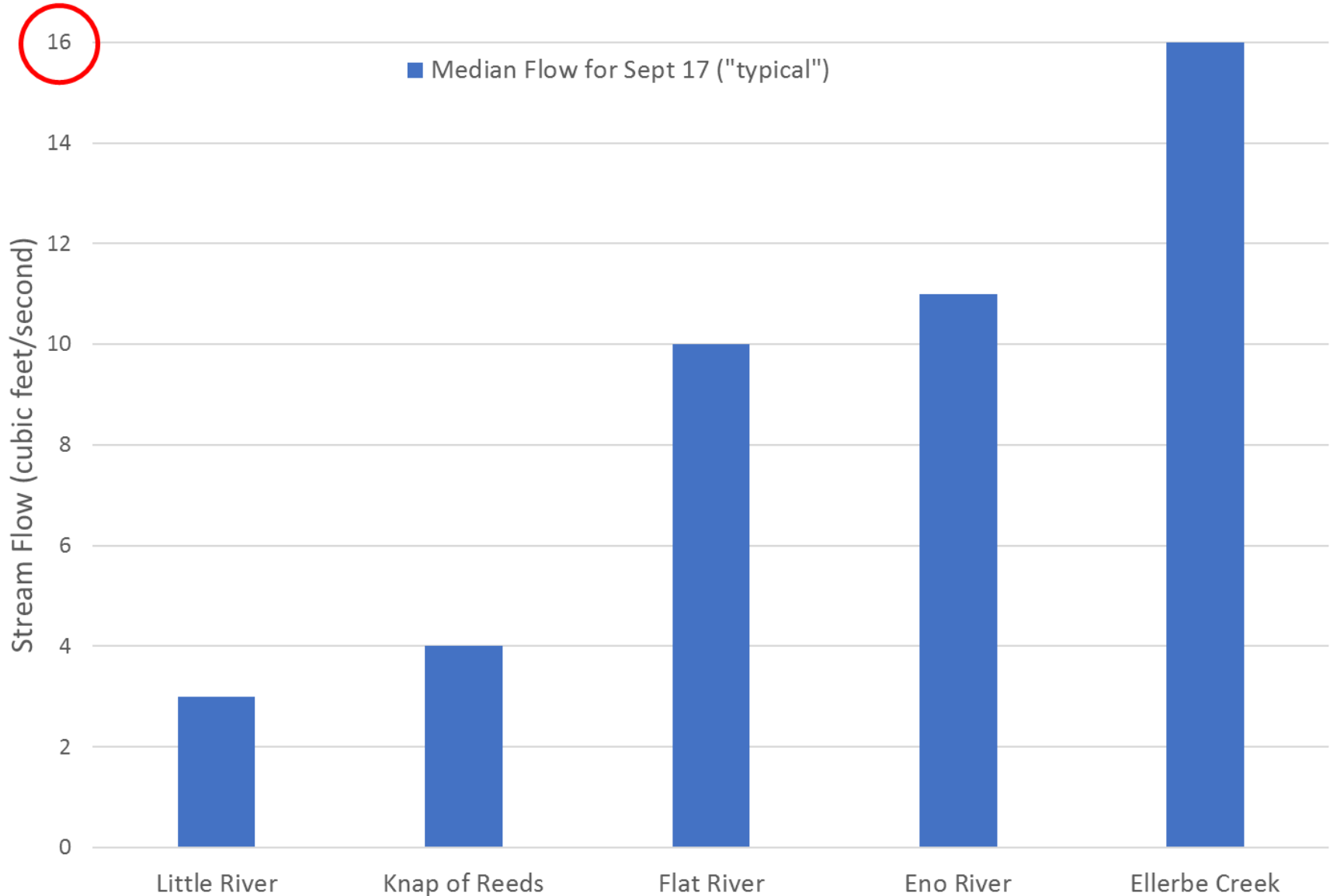
High Flo(rence) Event

- September 17-18
- “Big Five” lake tributaries sampled
- Serendipitously, Routine Monitoring is also going on this week, which will provide additional high flow samples for at least some of the other stations

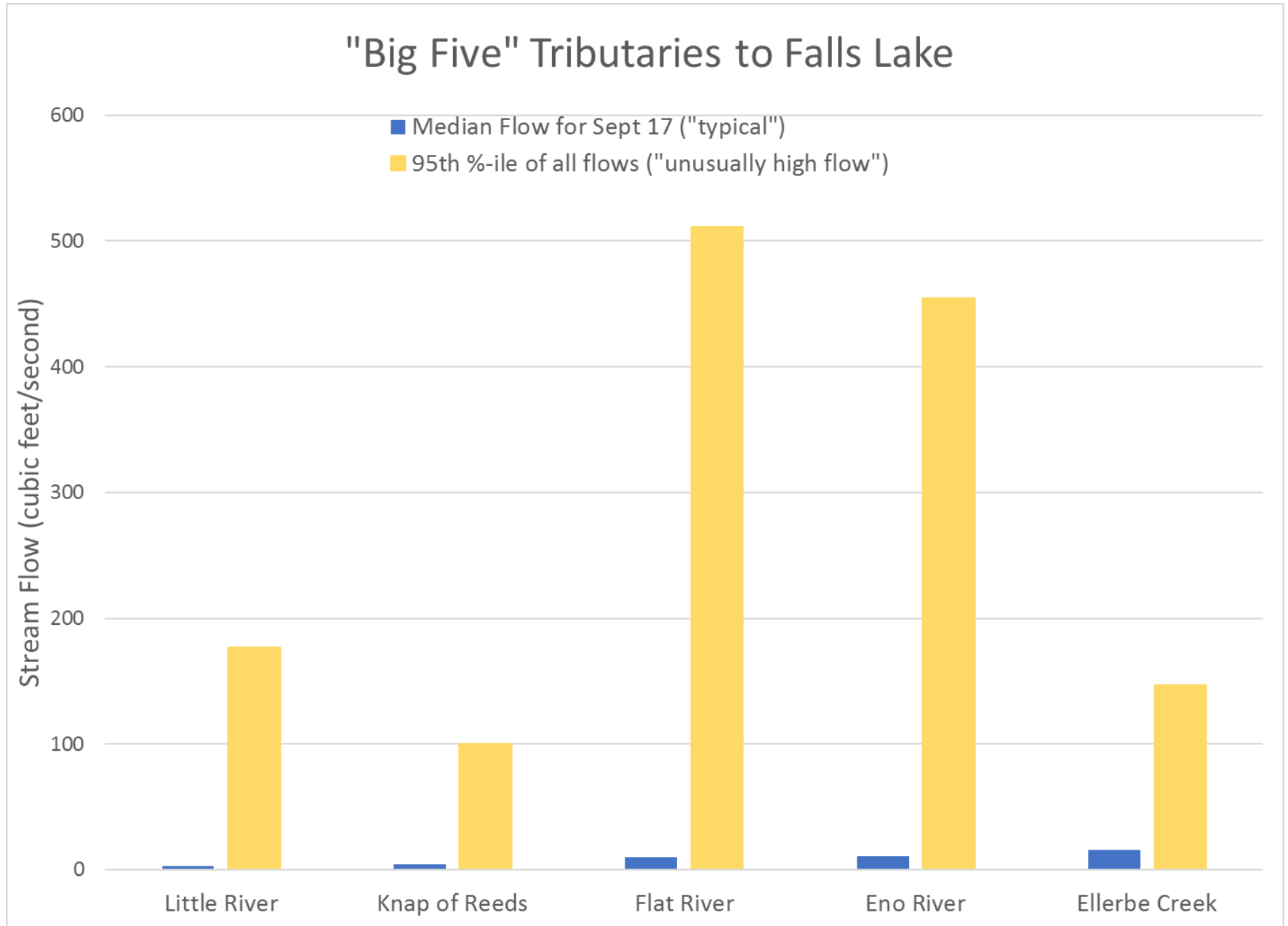
How did Florence affect flows into the reservoir....?

A Visit from Florence

"Big Five" Tributaries to Falls Lake

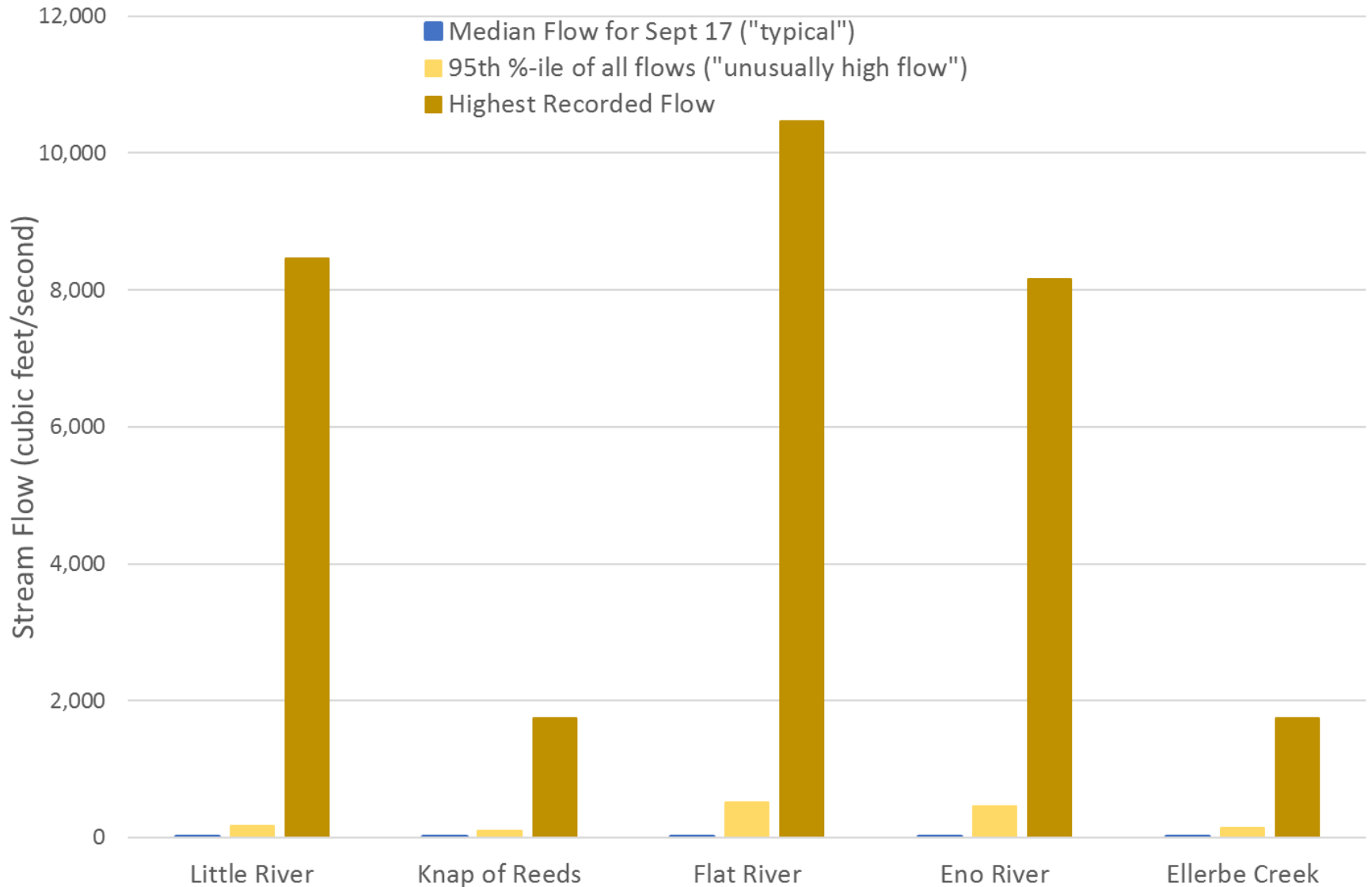


A Visit from Florence

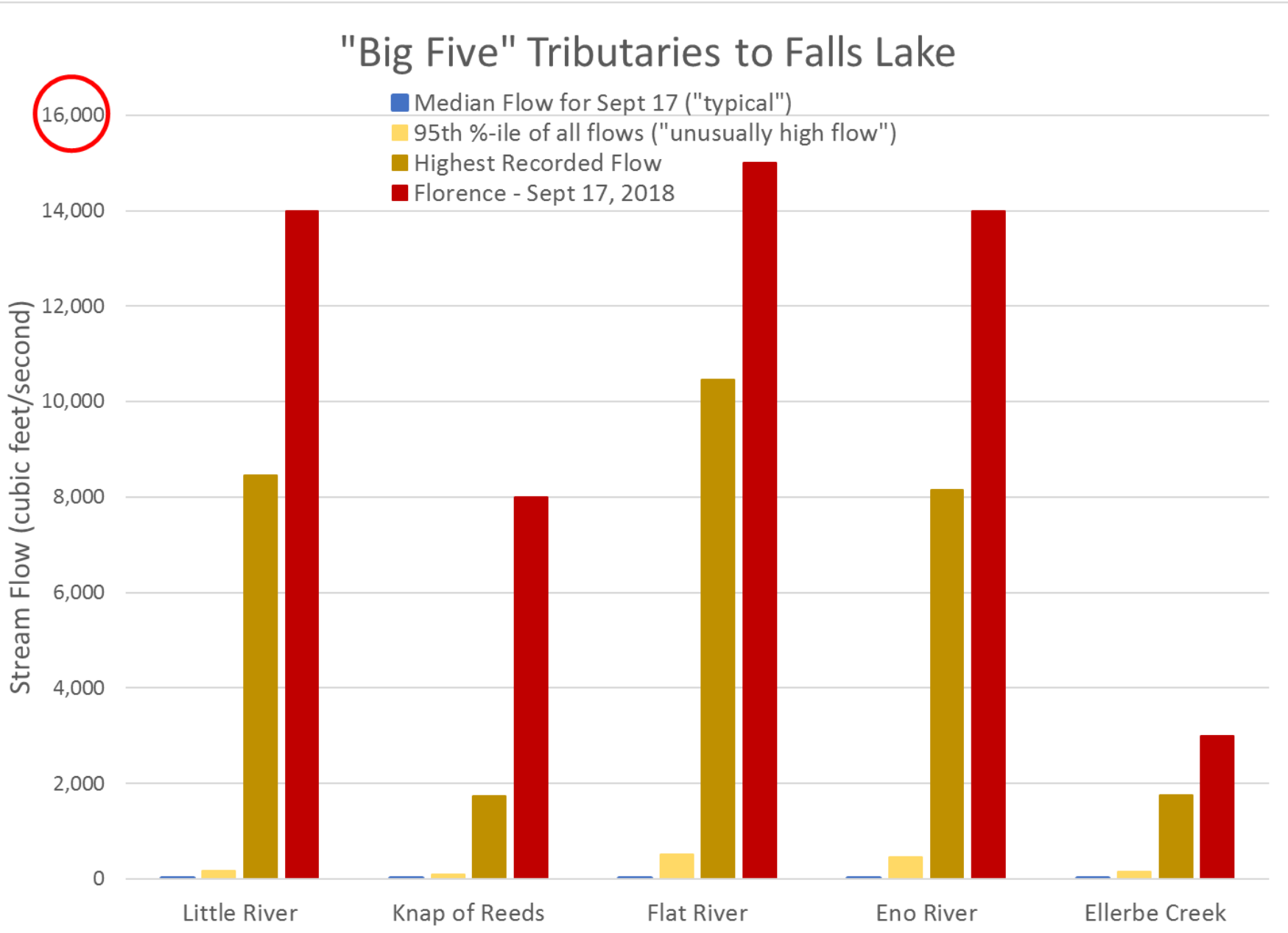


A Visit from Florence

"Big Five" Tributaries to Falls Lake



A Visit from Florence



A Visit from Florence

Peak inflow from the “Big Five on Sept 17: **54,000 cfs**



Ellerbe
Creek



Eno
River

Discharge from the Falls Lake Dam: **1 cfs**



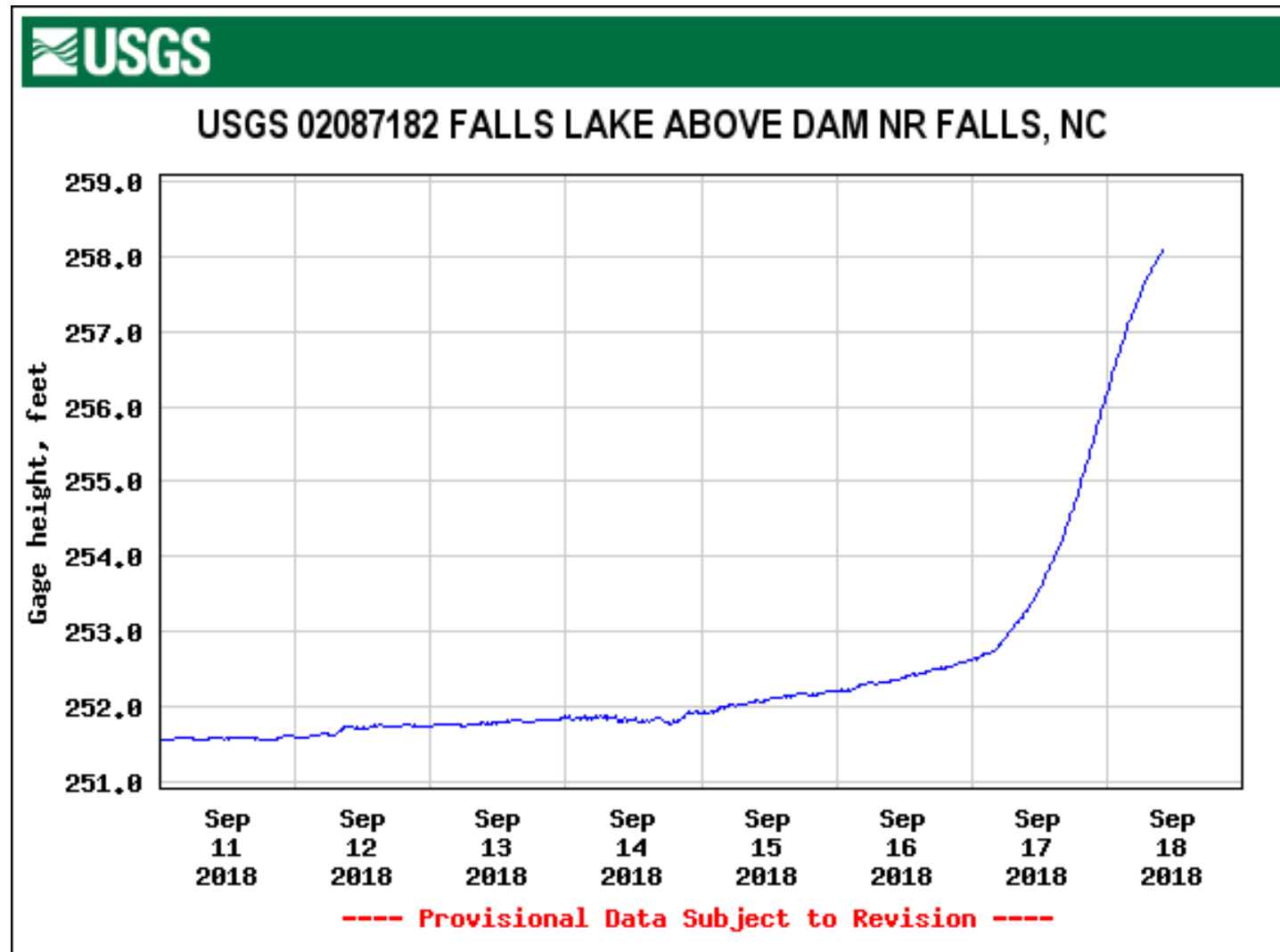
Neuse
River
below
dam



A Visit from Florence

Peak inflow from the “Big Five on Sept 17: **54,000 cfs**

Discharge from the Falls Lake Dam: **1 cfs**



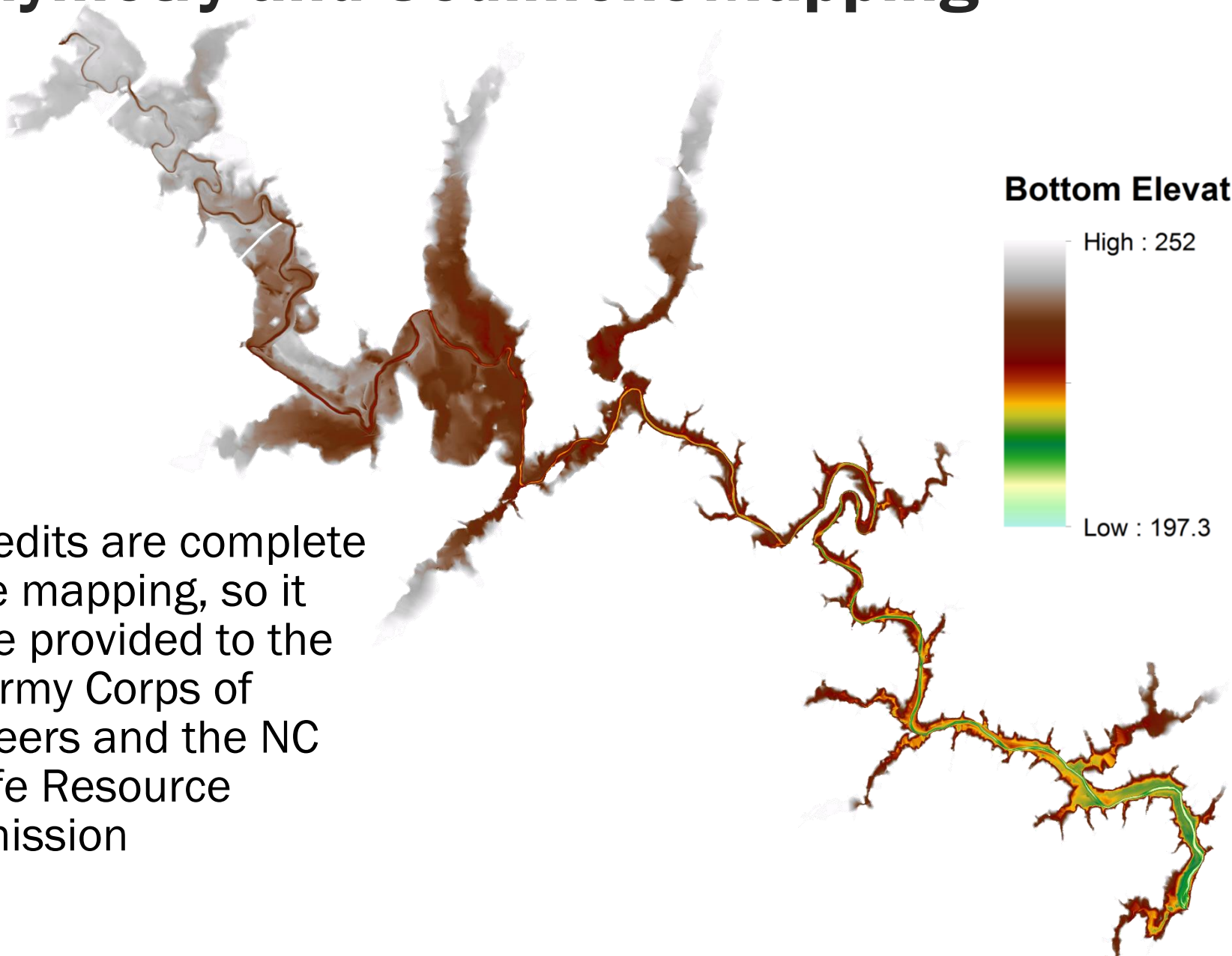
Special Studies Update

**No Special Studies specifically
included in the FY2019 budget**

Sediment Evaluation

- Marc Alperin provided second draft of sediment report
- BC offered comments on the report and returned it to Dr. Alperin
- He is working on completing the report in the coming weeks

Bathymetry and Sediment Mapping



Final edits are complete on the mapping, so it can be provided to the U.S. Army Corps of Engineers and the NC Wildlife Resource Commission

Questions ?

