

UNRBA Board Meeting

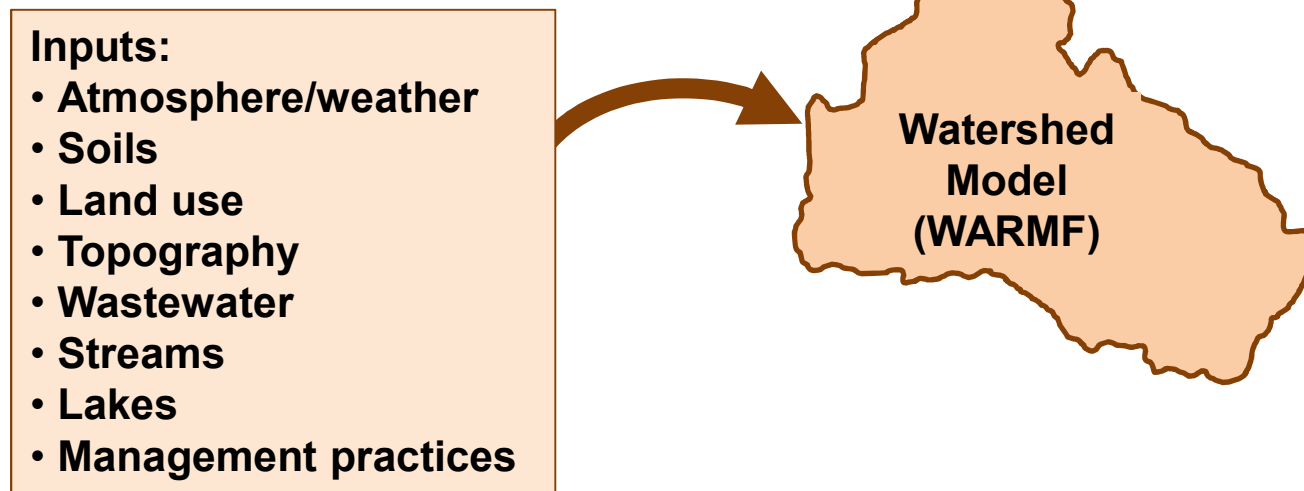
MRS Project Status Update

April 25, 2018



Data Acquisition to Support Modeling

- Continuing to receive data from organizations in the watershed
- Summarizing for review by UNRBA and stakeholders
- Include 3rd party reviewers as available
- Please submit available data as soon as possible



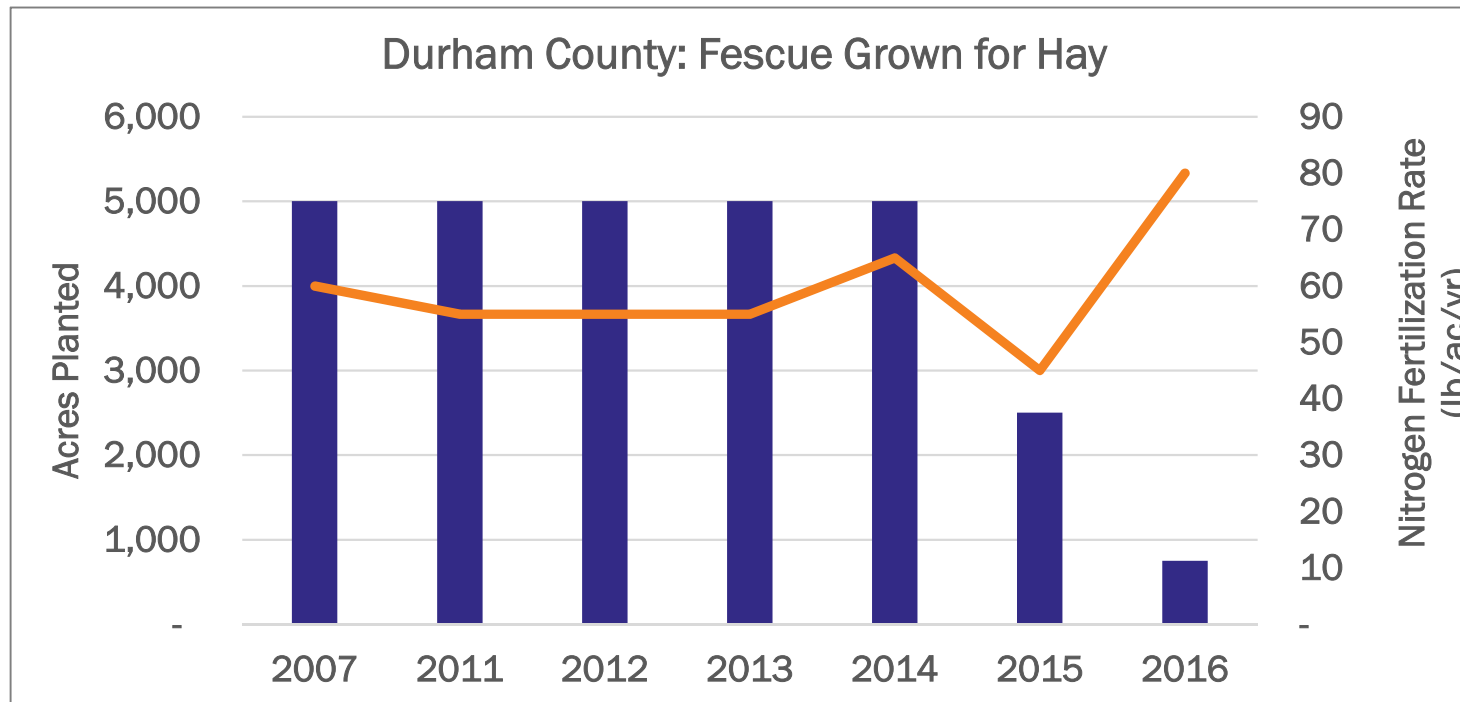
Highlight Recent Data Provided by NC Department of Agriculture

- County level data
 - Provided for 2007 and 2011 through 2016
 - Crop acres planted (including pasture)
 - Nitrogen fertilization rates for each crop (includes all types)
- Crop Data
 - Planting times
 - Harvest times
 - Fertilization frequency and timing



Example: Fescue Grown for Hay in Durham County

- Planting occurs in April
- Two to three cuttings through November
- Fertilizer is typically applied in four equal amounts
 - At planting, one month after planting, in September and October



Considerable Amount of Information for Agriculture

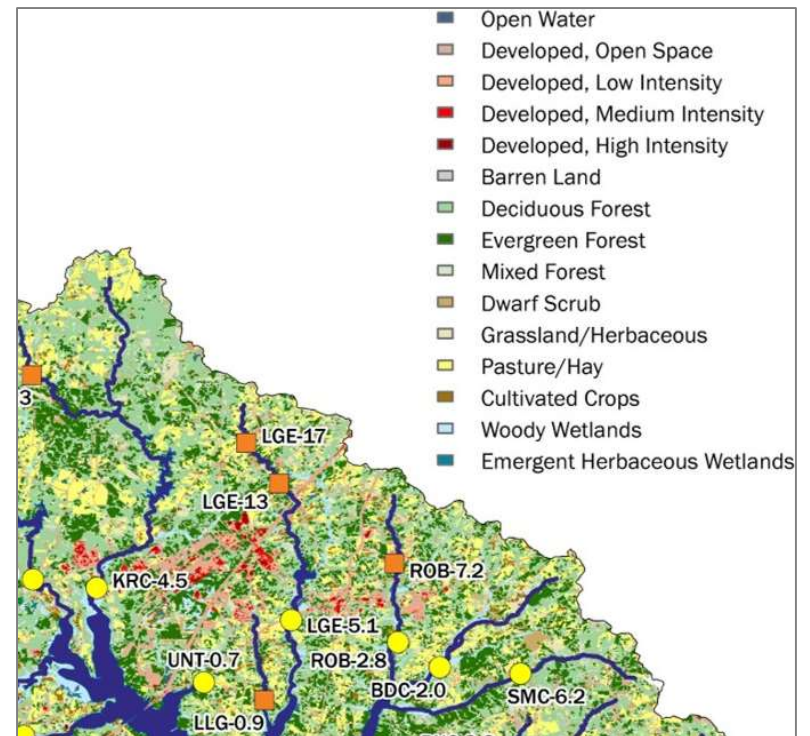
- Six counties
- Seven years
- Twenty crops

Barley	Corn: Grain	Corn: Silage	Cotton
Cucumber	Hay: Bermuda grass	Hay: Fescue	Hay: Sorghum Sudan
Oats	Pasture: Fescue	Peanuts	Pearl Millet
Rye	Sorghum	Soybeans: Double- cropped	Soybeans: Full Season
Sweet Potatoes	Tobacco: Burley	Tobacco: Flue Cured	Wheat

Some of these have little to no acres planted for a given year. Larger fonts indicate at least 1,000 acres planted in any county in any year.

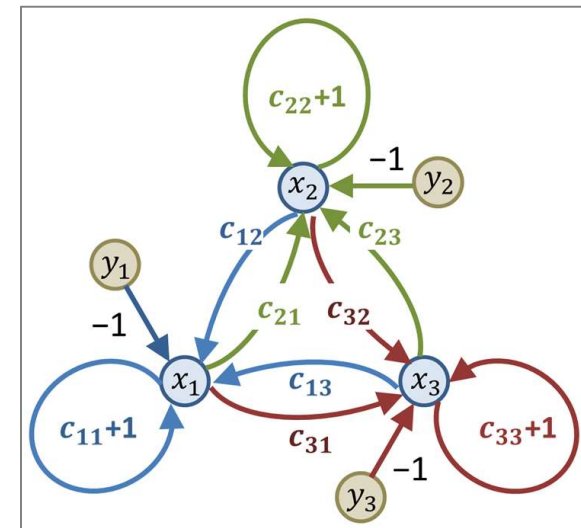
Update on USGS National Land Cover Data

- NLCD data are currently available for 2006 and 2011
- USGS indicates that 2016 data will be published in late 2018
- Older data sets will be “reharmonized” and released at the same time
 - Provide more consistent comparison through time



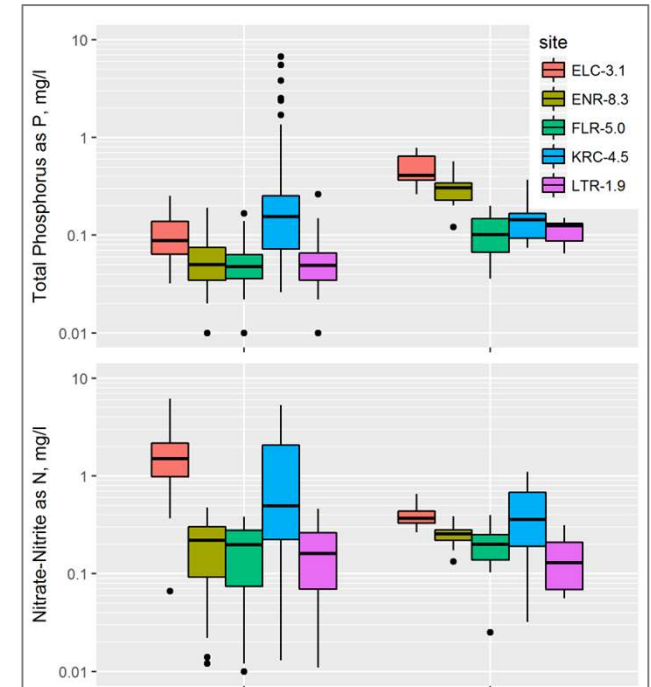
Processing Land Use Land Cover Data

- The modeling team proposes to use the available data as a starting point
- Establish the algorithms and rules that will be used to process land use data
- Need to merge different types of information
 - NLCD provides a good starting point across the watershed
 - Some local governments have more refined data
 - NC Department of Agriculture has provided acres planted by year and county
 - Agricultural parcel database identifies the presence of agriculture



Modeling Team Review of the Annual Report and the UNRBA Monitoring Program

- The water quality data collected is sufficient to develop the watershed and lake models
- Additional parameters or special studies are not needed
- A fifth year of monitoring would not likely provide further benefit to the model (the model period ends in 2018)
- Supporting analyses would be beneficial to the modeling
 - Cluster analyses of in-lake monitoring stations
 - Evaluation of lake profile data
 - Updated load estimations for the big five tributaries



Questions ?



	Sep	Oct	Nov	Dec	Jan	Feb	Mar	Apr	May	Jun
ACTIVITY										
Sign Contract (Sep 20)	█									
Development and Distribution of the Data Acquisition Form to Stakeholders	█									
Stakeholder kickoff meeting (Oct 25)		█	█	█	█	█	█	█	█	█
Draft Data Management Plan		█	█	█	█	█	█	█	█	█
Targeted calls/meetings regarding data collection (ag, DOT, etc.)			█	█	█	█	█	█	█	█
Compile and summarize publically available and discreet data sets		█	█	█	█	█	█	█	█	█
Develop EFDC model grid		█	█	█	█	█	█	█	█	█
Begin WARMF configuration			█	█	█	█	█	█	█	█
Exploratory statistical analyses		█	█	█	█	█	█	█	█	█
Draft memo summarizing preliminary model configuration and analyses (EFDC, WARMF, Stats)					█	█	█	█	█	█
Stakeholder meeting to data acquired, issues identified, additional data gaps; preliminary model configuration								█	█	█
Update the Multi-year work plan and develop Year 3 scope of work								█	█	█
Review and comment on FY2018 MP Annual Report; develop recommendations for long-term monitoring								█	█	█

