



DWR Update
February 28, 2018
UNRBA PFC Meeting

Department of Environmental Quality



DWR Update Topics

- Preservation & Urban Buffer Practices – Rich Gannon & Trish D’Arconte
- Model Program Status and Schedule – John Huisman
- Delivery Factors – Trish D’Arconte
- Snap Tool Rollout – Trish D’Arconte
- Jurisdictional Loads - Trish D’Arconte & John Huisman
- Schedule Issues in Current Rules – John Huisman



2013 **Draft** Model Program

Table of Contents

Model Program for Existing Development Stormwater	5
I. Overview.....	5
II. Required Elements of Local Programs.....	7
Measures Feasibility Assessment.....	7
Implementation Plan.....	10
Staging of Plans.....	11
Program Approval Standards.....	13
Measures.....	14
III. Methods to Quantify Load Reduction Needs.....	16
Basic Terms and Concepts.....	16
Estimating Post-Baseline Stormwater Loads.....	19
Jordan-Specific Calculations.....	20
Falls-Specific Calculations.....	23
IV. Onsite Wastewater and Collection System Load Accounting.....	24
Conceptual Nutrient Accounting Approach for Onsite Systems.....	25
V. Available Nutrient Measures and Methods to Quantify Credits.....	27
Supporting Information for Affected Parties	33
VI. Additional Terms & Concepts.....	34
Existing Development.....	34
Police Powers.....	36
VII. Key Rule Requirements.....	38
Falls - Key Requirements.....	38
Jordan - Key Requirements.....	39
VIII. Adjusting Load Allocations and Reduction Needs.....	41
Common Principles of Falls & Jordan Existing Development Reduction Needs.....	41
Adjusting Load Reduction Needs & Allocations: Credit for Baseline BMPs.....	43
Adjusting Allocations & Load Reduction Needs: Crediting Post-Baseline BMPs.....	44
Adjusting Allocations & Load Reduction Needs Due to Annexation.....	46
IX. Addition of Nutrient Measures.....	49
Measures Approval Process.....	49
Potential Measures.....	51
X. Trading.....	57
XI. Program Implementation and Annual Reporting Requirements.....	58
Implementing Approved Programs.....	58
Annual Reporting.....	59
Appendices	63
Appendix A: Rules/Session Laws.....	65
Appendix B: Proposed DWQ Process for Approving Design Standards and Associated Credit for Candidate Nutrient Load-Reducing Measures.....	67



Key Elements of Model Program

- Required Elements of Local Programs
- Methods to Quantify Load Reduction Needs
 - Onsite Wastewater & Collections Systems Load Accounting
- Nutrient Practices & Credits Methods aka “Credits Catalog”
- Supporting Information
- Appendices

Model Program Status

- **Required Elements of Local Program - *needs updating***
 - Measures Feasibility & Implementation Plan
 - Program Approval Standards
- **Reference to Joint Compliance Approach – *to be added***
 - LGs ability to work together towards joint reductions
 - Specifics of joint compliance included in Trading Framework
- **Methods & Load Reduction Needs – *in progress***
 - Methods for Estimating Post-Baseline Stormwater Loads
 - Estimating Onsite Wastewater & Collection System Loads

Department of Environmental Quality



Model Program Status - Continued

- Credit Practices aka Credit Catalog – *in progress*
- Trading Framework – *in progress*
- Supporting Info
 - Rule Requirements
 - Guidance for adjusting load reduction needs
- Annual Reporting Requirements – *needs updating*



Model Program - Timeline

- Identify revisions needs & update draft document – Ongoing
- Develop individual credit practices – Ongoing
- Present Draft Revised Trading Framework to NSAB – April/May
- Draft Jurisdictional Loads – April
- Share Draft Model Program w/ UNRBA – This Summer
- Present Final Model Program – Sept. WQC / Nov. EMC

Department of Environmental Quality



Nutrient Credit Practices



In Progress – Complete by September '18	Additional Practices
Buffer Improvement in Developed Areas	Stream Restoration
Forest Preservation	Urban Tree Canopy
Storm Drain Cleanout	Cropland Conversion
Wastewater Regionalization / Overtreatment	Bioswales
Street Sweeping	Rural Buffer Restoration
Remedy Malfunctioning Septic Systems	Regenerative Stormwater Conveyance
Remedy Discharging Sand filters	
Urban Reforestation	

Note: Practices can continue to be added to catalog over time



What are Delivery Factors/Zones?

Values used to account for the fractional in-stream loss of nutrients through various biogeochemical processes between the nutrient source and the destination waterbody.

- Delivery factors/transport factors → the percentage leaving the source that reaches the destination waterbody.
- Trapping factors → the percentage leaving the source that is retained and does not reach the destination waterbody.
- Delivery zones → grouping of small watersheds by their delivery/trapping factors in a watershed model.



Purpose / How are they used

Delivery factors provide a common currency (delivered pounds) for nutrient debits and credits generated anywhere in the watershed.

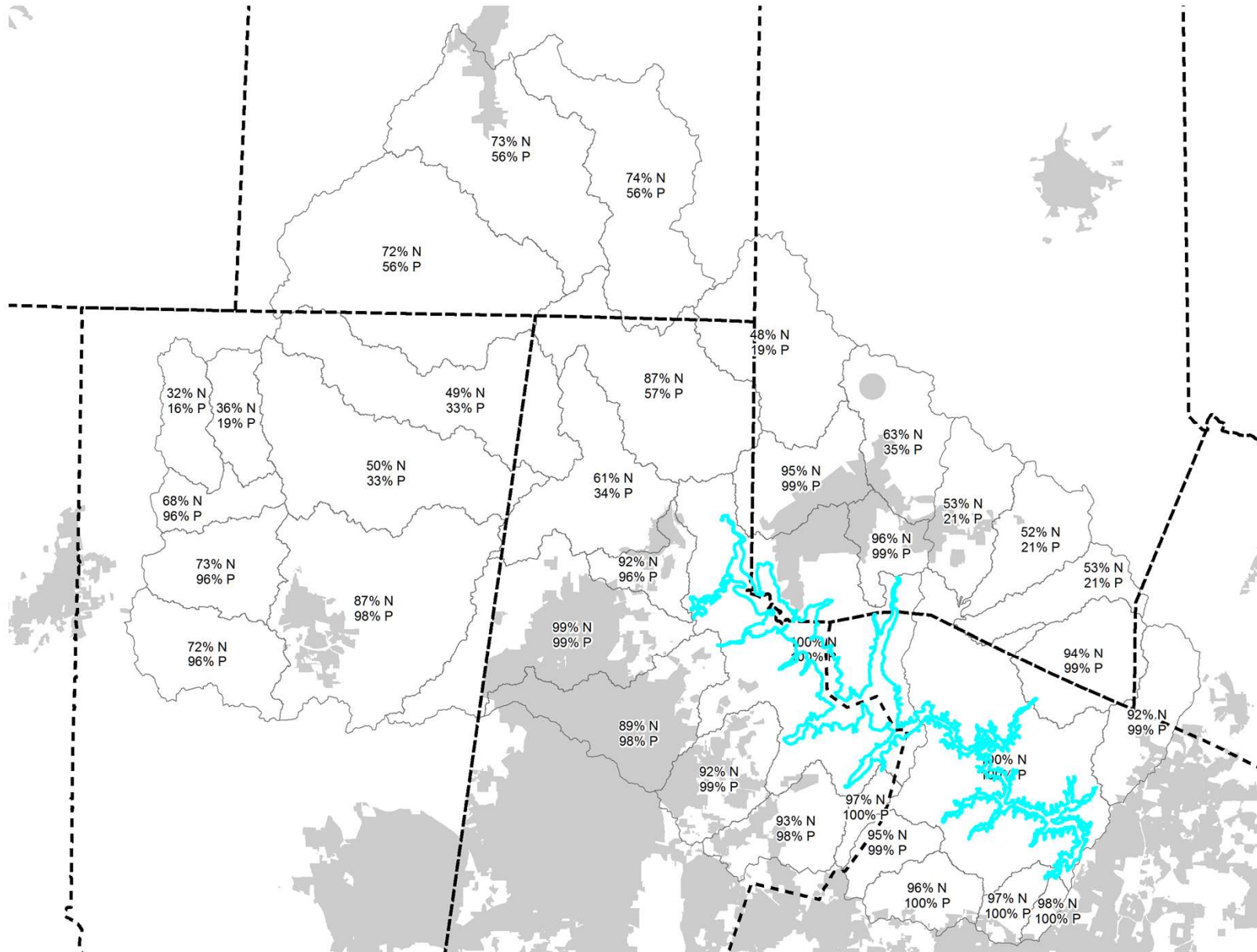
They enable trading between entities and nutrient-generating sectors.

Delivery factors may be set up to apply to:

- New Development offset (buy-down)
- Existing Development nutrient reduction projects
- Nutrient credit banks (such as through riparian restoration)
- Wastewater dischargers
- Joint compliance (wastewater dischargers, existing development, multiple jurisdictions)



Falls Lake Delivery Zones



SNAP Tool Rollout

- Delivery Factors – whether to use or not – must be resolved first
- Required for New Dev and SCM retrofit of Existing Dev
- 6 months for implementation from date of DWR approval
- Previously-approved projects grandfathered
- Tool Support:
 - Training session with LG Plan Reviewers
 - NCSU SNAP training for anyone (not specific to plan review)
 - Bug fixes by DWR as needed
 - Changes in calculation method/inputs will have a public input process



NEXT STEPS

- Work ongoing w/ LGs on individual basis using steps laid out at Jan PFC
- March: Complete 2nd Round of Conference Calls with LGs
- April: Draft Results and Method Descriptions from LGs
 - In time for April PFC meeting – technical questions session



QUESTIONS

Trish D'Arconte

919-807-6439

trish.darconte@ncdenr.gov

John Huisman

919-807-6436

john.huisman@ncdenr.gov

Department of Environmental Quality

